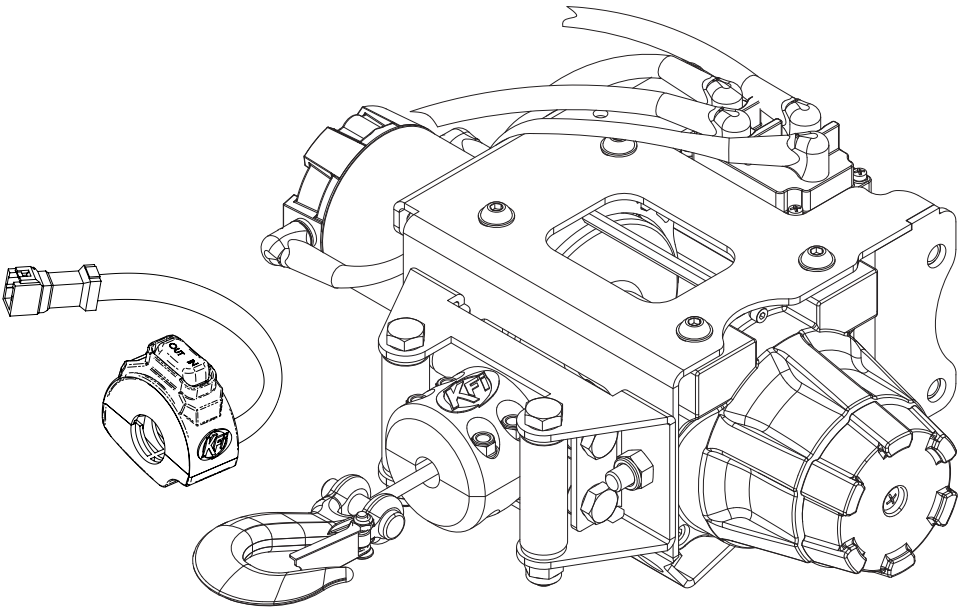




Owner's Manual and Operating Instructions



2500 lb.
ATV/UTV WINCH

Table of Contents

Introduction	1
Accessories	1
This Booklet	1
Introduction	1
Manual Conventions	2
Safety Rules	3
Controls and Features	5
Winch	5
Installation.....	6
Step 1-ATV Install Preparation	6
Step 2-Winch Assembly Preparation.....	7
Step 3-Install Winch Assembly	8
Step 4-Handlebar Remote Install.....	9
Step 5-Reinstall	9
Operation.....	10
General Tips for Safe Operation.....	10
Self Recovery	10
Winching Techniques	11
Maintenance	12
Motor	12
Lubrication	12
Cable Assembly Replacement.....	12
AMP-25-R2 Specifications	13
Performance Specifications	13
Model Winch Diagram	14
Winch Parts List	15
Troubleshooting.....	16
Plowing Alert.....	16
Warranty	17
Warranty Qualifications	17
Repair/Replacement Warranty	17
Do not return the unit to the place of purchase	17
Warranty Exclusions	17
Normal Wear	17
Installation, Use and Maintenance	17
Other Exclusions	17
Limits of Implied Warranty and Consequential Damage.....	17
Contact Information.....	18
Address	18
Corporate:	18
Customer Service.....	18
Technical Service	18
Agreement	18
Notes	19

Introduction

Congratulations on your purchase of a KFI winch. KFI researches and develops winches to strict specifications. With proper use and maintenance, this winch will bring years of satisfying service.

Accessories

Kappers Fabricating Inc. manufactures, purchases and sells accessories designed to help you get the most from your purchase. To find out more about our products visit our web site at

www.kfiproductions.com

Record the model as well as date and place of purchase for future reference. Have this information available when ordering parts and when making technical or warranty inquiries.

Kappers Fabricating Inc. Support
1-877-346-2050
Model Number
AMP-25-R2
Date of Purchase
Purchase Location
Serial Number

This Booklet

Every effort has been made to ensure the accuracy and completeness of the information in this manual. We reserve the right to change, alter and/or improve the product and this document at any time without prior notice.

Manual Conventions

Manual Conventions

This manual uses the following symbols to help differentiate between different kinds of information. The safety symbol is used with a key word to alert you to potential hazards in operating and owning a winch.

Follow all safety messages to avoid or reduce the risk of serious injury or death.

DANGER

DANGER indicates an imminently hazardous situation which, if not avoided, will result in death or serious injury.

WARNING

WARNING indicates a potentially hazardous situation which, if not avoided, could result in death or serious injury.

CAUTION

CAUTION indicates a potentially hazardous situation which, if not avoided, may result in minor or moderate injury.

CAUTION

CAUTION used without the safety alert symbol indicates a potentially hazardous situation which, if not avoided, may result in property damage.

NOTE

If you have questions regarding your winch, we can help. Please call our help line at 1-877-346-2050.

Safety Rules

WARNING

Read this manual thoroughly before operating your winch. Failure to follow instructions could result in serious injury or death.

WARNING

Do not move the vehicle to pull a load (towing) on the winch cable. This could result in cable breakage.

WARNING

Do not exceed the rated capacity.

WARNING

Pull only on areas of the vehicle as specified by the vehicle manufacturer.

DANGER

Do not use this winch for lifting or moving people or animals.

WARNING

Do not use the winch to secure or hold a vehicle for a long period of time. Do not use the winch to secure a vehicle for transport.

WARNING

Keep yourself and others a safe distance from the side of the cable when under tension.

WARNING

Disconnect the remote control and battery leads when not in use for extended periods.

WARNING

Never step over a cable or near a cable under load.

WARNING

Avoid "shock loads" by using the control switch intermittently to take up the slack in the wire rope. "Shock loads" can far exceed the rate capacity for the cable and drum.

WARNING

The cable may break before the motor stalls. For heavy loads at or near rated capacity, use a pulley block/snatch block to reduce the load on the wire rope.

Do not accelerate your vehicle while winching. Loss of traction can cause a shock load on the cable. Do not use cable as a pull strap.

Safety Rules

WARNING

Batteries contain acid and produce explosive gases.

Keep sparks, flames and cigarettes away from batteries at all times. Wear safety glasses and protect the eyes at all times. Do not lean over the batteries during operation.

WARNING

When re-spooling the cable, ensure that the cable spools in the under-wind position with the cable entering the drum from the bottom, not the top.

To re-spool correctly, and while wearing gloves, keep a slight load on the cable while pushing the remote button to draw in the cable. Walk toward the winch not allowing the cable to slide through your hands. Do not let your hands get within 12" of the winch while re-spooling. Turn off the winch and repeat the procedure until a few feet of cable is left. Disconnect the remote control and finish spooling by rotating the drum by hand with the clutch disengaged. Keep hands clear of the fairlead and drum while the winch is under power.

WARNING

Do not use as a hoist. Do not use for overhead lifting.

CAUTION

Use gloves to protect hands when handling the cable. Never let the cable slide through your hands.

CAUTION

Do not wrap the cable around any object and hook it back onto itself.

CAUTION

Apply blocks to the wheels of the vehicle when on an incline.

CAUTION

Duration of winching pulls should be kept as short as possible.

If the motor becomes uncomfortably hot to the touch, stop winching immediately and let it cool down for a few minutes. Do not pull for more than one minute at or near the rated load.

CAUTION

If the motor stalls, do not maintain power to the winch.

Electric winches are designed and made for intermittent use and should not be used in constant duty applications.

CAUTION

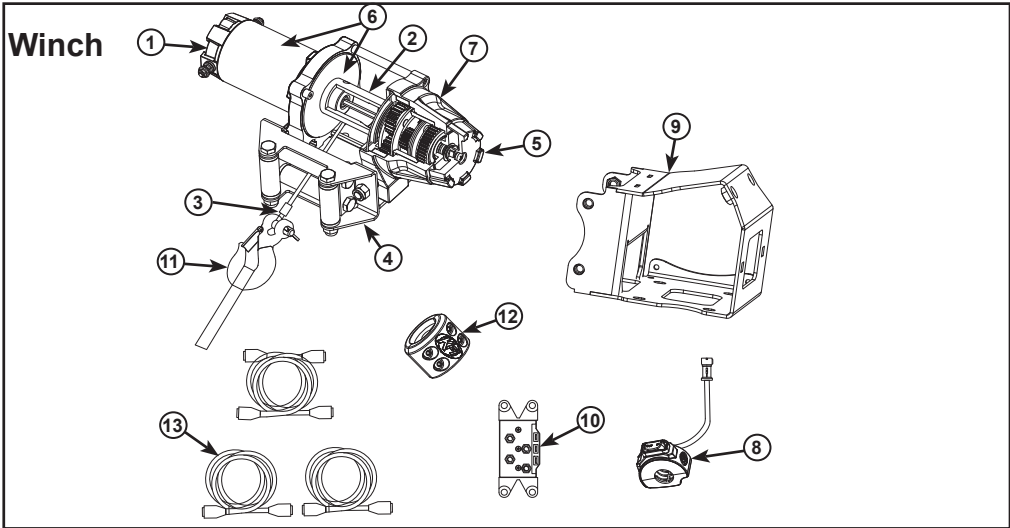
Never release the release clutch when there is a load on the winch.

CAUTION

Use hook strap when handling the hook for spooling or unspooling the cable.

Controls and Features

Read this owner's manual before operating your winch. Familiarize yourself with the location and function of the controls and features. Save this manual for future reference.



Motor (1): 1.07 HP 12V DC motor provides power to the planetary gear mechanism.

Winch Drum (2): The winch drum is the cylinder on which the cable is stored. It can feed or wind the rope depending on the remote winch switch.

Steel Cable (3): 3/16" x 45.9' Steel cable designed specifically for load capacity of 2,500lbs. (44 useable feet with five wraps on the drum). The steel cable feeds onto the drum in the "under wind" position through the roller fairlead (4) and is looped at the end to accept the clevis hook pin (11).

Roller Fairlead (4): When using the winch at an angle the roller fairlead acts to guide the steel cable onto the drum and minimizes damage to the steel cable from abrasion on the winch mount or bumper.

Free spooling Clutch (5): The clutch allows the operator to manually disengage ("RELEASE") the spooling drum from the gear train. Engaging the clutch ("ENGAGE") locks the winch into the gear system.

Braking System (6): Braking action is automatically applied to the winch drum when the winch motor is stopped and there is a load on the steel cable.

Planetary Gear System (7): The reduction gears convert the winch motor power into extreme pulling forces. This system allows high torque while maintaining compact size and light weight.

Clamshell Plug & Play Mini-Rocker Switch (8): Handlebar mounted switch for easy access. Plugs directly into factory harness

Model Specific Winch Mount (9): Winch mount designed specifically for select ATVs.

Contactor (10): Power from the vehicle battery flows through the weather sealed solenoid switch before being directed to the winch motor.

Clevis Hook (11): Provides a means for connecting the looped ends of cables to an anchor.

Cable Hook Stopper (12): Protects the Rollers, motor and gears.

Wires (13): Model Specific Pre-installed Wires

Installation

Installation

This KFI 2,500 lb Plug & Play winch assembly is designed to be a direct fit up to the specific ATV Models from our online application chart.

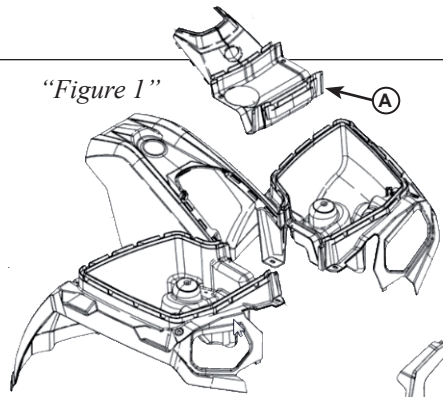
Step 1-ATV Install Preparation

WARNING

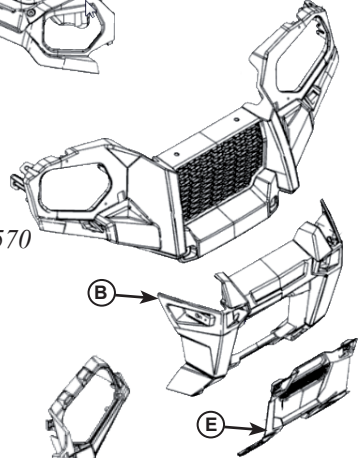
Before you start to install this winch, disconnect the vehicle ground and positive leads from the battery. (ETX, 450 and 570 battery is located lower front frame and the 850 and 1000 is located under the front rack)

1. On the 850 and 1000 Models remove the front rack to gain access to the battery. Disconnect the battery.
2. On the ETX, 450 and 570, open the front rack and remove the center cover [A] by removing the (4) Torx fasteners. You will also need to lightly pull the rubber seal out of the groove around the center cover to be removed as shown in Figure 1.
3. Remove any added on bumpers or brush guards.
4. Remove the lower cowling [B] on the Sportsman models and the bumper [C] and front assembly clip [D] on the Scramblers as shown in Figure 2-5.
5. Remove and discard the Winch pocket cover [E] shown in Figure 2-5.
6. Remove the winch assembly from the box and cut the zip tie that is holding the power wires for packaging.

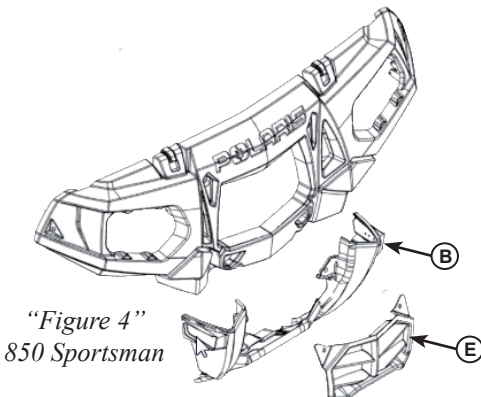
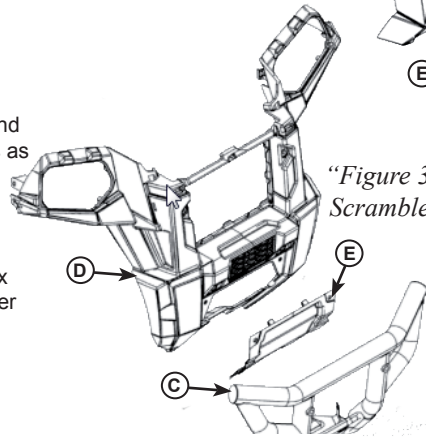
"Figure 1"



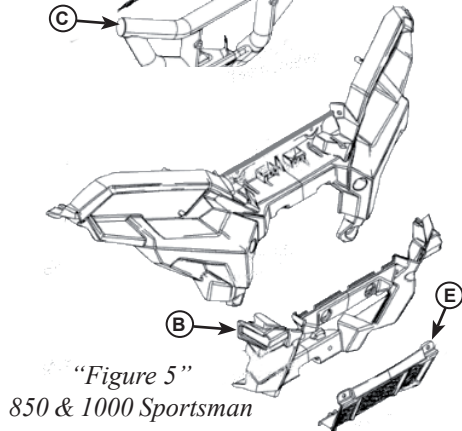
"Figure 2"
ETX, 450 and 570



"Figure 3"
Scrambler



"Figure 4"
850 Sportsman



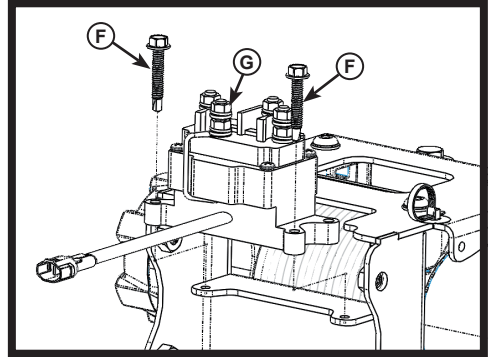
"Figure 5"
850 & 1000 Sportsman

Installation

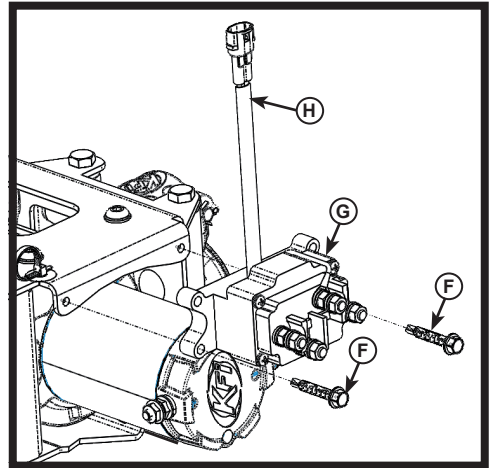
Step 2-Winch Assembly Preparation

This winch assembly comes pre-assembled and ready to go for the 850 and 1000 Polaris ATV's. If you have the 850 or 1000 please skip this step. If you have the ETX, 450 or 570 ATV please continue with this step.

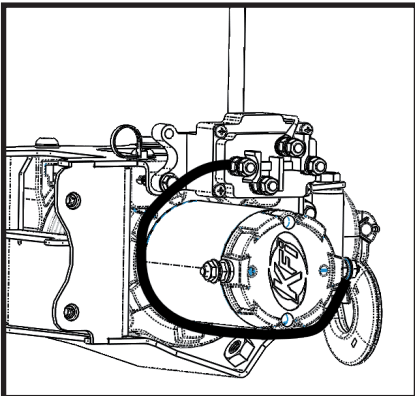
1. Remove the (2) self tapping crews [F] holding the contactor [G] down in the back of the assembly as shown in Figure 6.
2. Move the contactor [G] to the new location on the side of the mount, as shown in Figure 7. Make sure the contactor plug [H] is in the orientation shown in Figure 7. To mount the contactor, re-use the self-tapping screws [F].
3. While mounting the contactor to the new location you will want to route the wires around the winch as shown in Figure 8 & 9. You should not have to loosen any of the pre-connected wires.



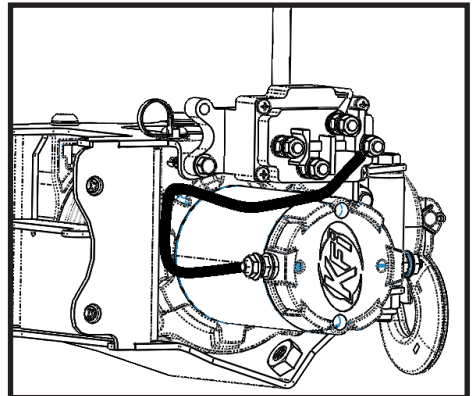
“Figure 6”



“Figure 7”



“Figure 8”



“Figure 9”

Installation

⚠ CAUTION

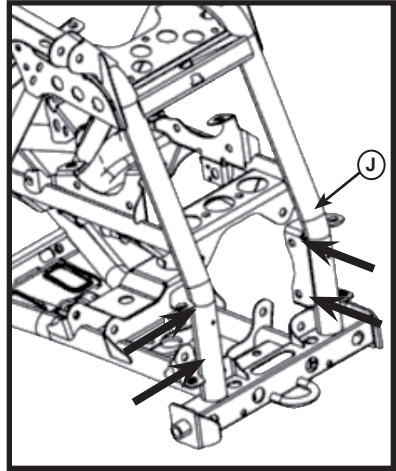
Never route electrical cables across any sharp edges, through or near moving parts, or near parts that become hot. Routing of the battery wires will be on the passenger side of the vehicle, just behind the radiator. Stay clear of cooling fan and use zip ties to secure wire in place.

⚠ CAUTION

Battery cables should not be drawn taut. Leave some slack for cable movement.

⚠ WARNING

FAILURE TO FOLLOW SPECIFIC WIRING INSTRUCTIONS MAY RESULT IN DAMAGE TO YOUR WIRING SYSTEM OR EQUIPMENT.

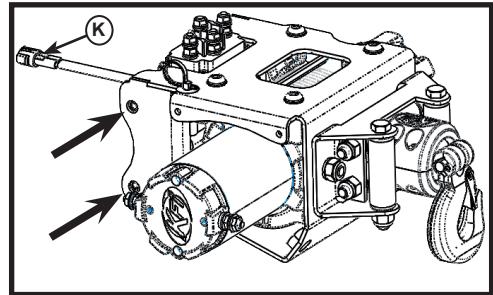


“Figure 10”

850 & 1000 Sportsman shown
EXT, 450 & 570 will be similar

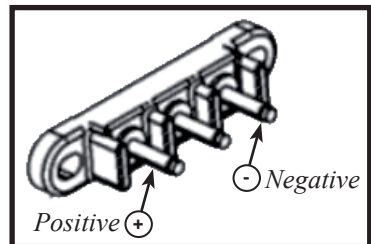
Step 3-Install Winch Assembly

1. Place winch into frame location while routing winch positive and negative wires to the location under the front rack and install (4) bolts, lock washers and washers loosely as shown in Figure 10 & 11.
2. On the 850 and 1000 connect the positive and negative wires directly to the battery terminals.
3. On the ETX, 450 and 570 connect the positive and negative wires to the Buss Bar as shown in Figure 12.
4. Tighten down the (4) bolts to secure the winch assembly to the frame.
5. Locate the White plug OEM pre-wired 2-pin connector, located near the winch assembly on the driver's side (*approximate location is shown in Figure 10 [JJ]*). This wire will have a green and black wire going into the white plug. Most 2015 and newer ATV's will have this pre-wired plug installed from the factory. Most 2014 and older models will require the purchase of this additional wire harness. Polaris Part #4015094. Please refer to application chart for details.
6. Cut the zip tie holding the wire to the frame and remove the protective cap.
7. Route the wire over to the contactor location on the winch assembly and connect it to the other 2-pin connector [K] that is coming out of the contactor shown in Figure 11.
8. Secure this wire if needed with zip ties.



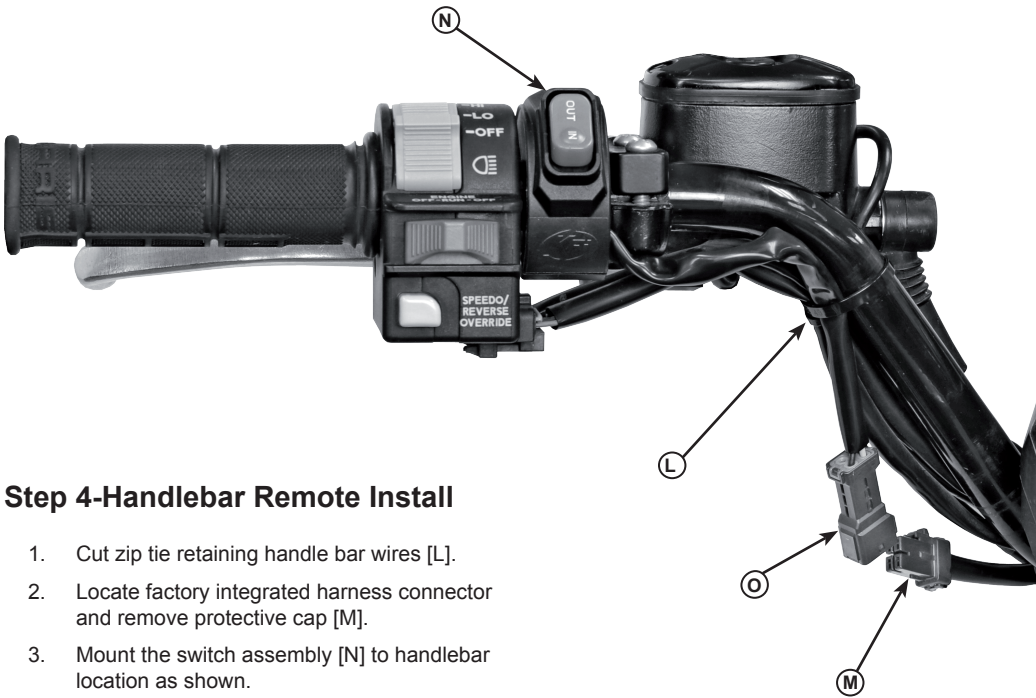
“Figure 11”

850 & 1000 Sportsman assembly shown
EXT, 450 & 570 will be similar



“Figure 12” Buss Bar on ETX, 450 & 570

Installation



Step 4-Handlebar Remote Install

1. Cut zip tie retaining handle bar wires [L].
2. Locate factory integrated harness connector and remove protective cap [M].
3. Mount the switch assembly [N] to handlebar location as shown.
4. With the switch mounted, attach the switch plug [O] to the integrated plug [M], and install a new zip tie at location [L].

Step 5-Reinstall

1. Turn your ATV ignition on and test the winch operation.
2. On the EXT, 450 and 570 re-assemble the center cover [A] from step 1.2 and close the front rack.
3. On the 850 and 1000 models re-assemble the front rack.
4. On all models, re-install the front lower cover, front clip on the scramblers and any aftermarket bumpers removed from steps 3 and 4.

Operation

General Tips for Safe Operation

Your AMP-25-R2 winch is rated at 2,500 lbs. capacity in first layer (max) when spooling the first rope layer on the drum. Overloads can damage the winch, motor and/or cable.

The vehicle engine should be kept running during operation of the winch to minimize battery drain and maximize power and speed of the winch. If the winch is used for a considerable time with the engine off the battery may be drained and too weak to restart the engine.

Get to know your winch before you actually need to use it. We recommend that you set up a few test runs to familiarize yourself with rigging techniques, the sounds your winch makes under various loads, the way the cable spools on the drum, etc.

Inspect the cable and equipment before each use. A frayed or damaged rope should be replaced immediately. Use only manufacturer's identical replacement rope with the exact specifications.

Inspect the winch installation and bolts to ensure that all bolts are tight before each operation.

Store the remote control inside your vehicle in a place that it will not be damaged.

Any winch that appears to be damaged in any way, is found to be worn, or operates abnormally **MUST BE REMOVED FROM SERVICE UNTIL REPAIRED**. It is recommended that the necessary repairs be made by a manufacturer's authorized repair facility.

Pull only on areas of the vehicle as specified by the vehicle manufacturer.

Only attachments and/or adapters supplied by the manufacturer are to be used.

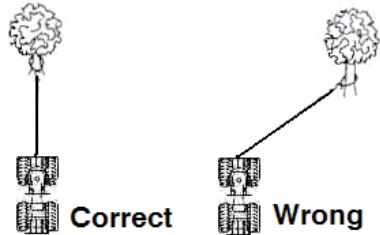
Self Recovery

Locate a suitable anchor such as a strong tree trunk or boulder. Always use a sling as an anchor point.



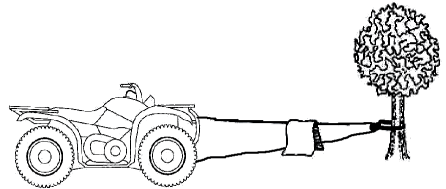
Your winch is equipped with a roller fairlead to help guide the cable and to reduce binding on short side pulls.

Do not winch from an acute angle as the cable will pile up on one side of the drum causing damage to cable and the winch.



Short pulls from an angle can be used to straighten the vehicle. Long pulls should be done with the cable straight out from the winch/vehicle.

When pulling a heavy load, place a cable hook stopper, blanket or jacket over the cable five or six feet from the hook.



In the event of a cable snap it will dampen the snap back. For additional protection open the hood of the vehicle.

Winching Techniques

1. Take time to assess your situation and plan your pull.
2. Put on gloves to protect your hands.
3. Disengage the clutch to allow free-spooling and also save battery power.
4. Attach the hook strap to the clevis hook.
5. Pull out the cable to your desired anchor point using the hook strap.
6. Secure the clevis hook to the anchor point: Sling, chain or snatch block. Do not attach the hook back onto the cable.
7. Engage the clutch.
8. Start your engine to ensure power is being replenished to the battery.
9. Power in the cable guiding the cable under tension to draw up the slack in the cable. Once the cable is under tension, stand clear. Never step over the cable.
10. Double check your anchors and make sure all connections are secure.
11. Inspect the cable. Make sure there are at least 5 wraps of cable around the winch drum.
12. Place cable hook stopper over the cable approximately 5 to 6 feet from the hook.
13. Clear the area. Make sure all spectators stand clear and that no one is directly in front or behind the vehicle or anchor point.
14. Begin winching. Be sure that the cable is winding evenly and tightly around the drum. The vehicle that is being winched can be slowly driven to add assistance to the winching process. Avoid shock loads; keep the cable under tension.
15. The vehicle to be winched should be placed in neutral and the parking brake released. Only release the loads to the winch. This can damage the winch, cable and vehicle.
16. The winch is meant for intermittent use. Under full load with a single line rig do not power in for more than a minute without letting the motor cool down for a few minutes and then resume the winching operation.
17. The winching operation is complete once the vehicle is on stable ground and is able to drive under its own power.
18. Secure the vehicle. Be sure to set the brakes and place the vehicle in park.
19. Release the tension on the cable. The winch is not meant to hold the vehicle for long periods of time.
20. Disconnect the cable from the anchor.
21. Rewind the cable. Make sure that any cable already on the drum has spooled tightly and neatly. If not, draw out the cable and re-spool from the point where the cable is tight.
22. Keep your hands clear of the winch drum and fairlead as the cable is being drawn in.
23. Secure the hook and hook strap.
24. Disconnect the remote control and store in a clean, dry place.
25. Clean and inspect connections and mounting hardware for next winching operation.
26. Never use the winch as a tie down.
27. Use brake pedal when under full tension.

Maintenance

Maintenance

The owner/operator is responsible for all periodic maintenance.



WARNING

Never operate a damaged or defective winch.



WARNING

Improper maintenance will void your warranty.

Complete all scheduled maintenance in a timely manner. Correct any issue before operating the winch.



NOTE

For service or parts assistance, contact our help line at 1-877-346-2050.

Motor

Periodically, when not used very often, or after wet / damp conditions, be sure to run the motor in free spool until the motor is warm. This helps dry out any moisture and condensation trapped inside the housing.

Lubrication

All moving parts within the Electric Winch have been lubricated using high temperature lithium grease at the factory. No internal lubrication is required under normal conditions. If the winch is subjected to extreme conditions lubrication may be required using a high temperature lithium grease.

Cable Assembly Replacement

It is recommended that any modifications be performed by a manufacturer's authorized repair facility, and that only manufacturer-supplied parts be used.

1. Rotate the clutch cap to the "Release" position.
2. Extend Cable Assembly to its full length. Note how the existing cable is connected to the inside of the drum.
3. Remove old Cable Assembly and attach new one.
4. Rotate the clutch cap to the "Engage" position.
5. Retract Cable Assembly onto drum being careful not to allow kinking or over heating of the winch.

AMP-25-R2 Specifications

Performance Specifications

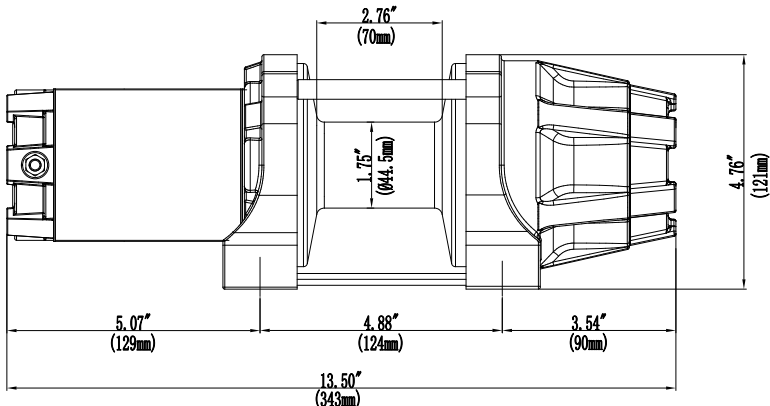
Rated Pull	2,500 lbs (1134 kg)
Gear Reduction Ratio	180:1
Motor	Permanent Magnet 1.07 HP/0.83kW (DC 12V)
Drum Size	1.75" (D) x 2.76" (L) 44.5 mm (D) x 70.0 mm (L)
Steel Cable	3/16" (D) x 45.9' (L) 4.8 mm (D) x 14 m (L) (44 useable feet with five wraps on the winch drum)
Weight	26.6 lbs. (NET)
Height	4.76 inches (121 mm)
Width	4.44 inches (113 mm)
Length	13.5 inches (343 mm)
Bolt Pattern	4-7/8" x 3" (124mm x 76 mm)

Line Speed and Motor Current (First Layer)

Line Pull Max	lbs	0	1000	1500	2000	2500
	kgs	0	454	680	907	1134
Line Speed (12 VDC)	FPM	12.1	9.5	8.5	7.5	5.9
	MPM	3.7	2.9	2.6	2.3	1.8
Max Current	amps	28	70	90	115	150
Cooling Time	minutes	5	5	5	5	5

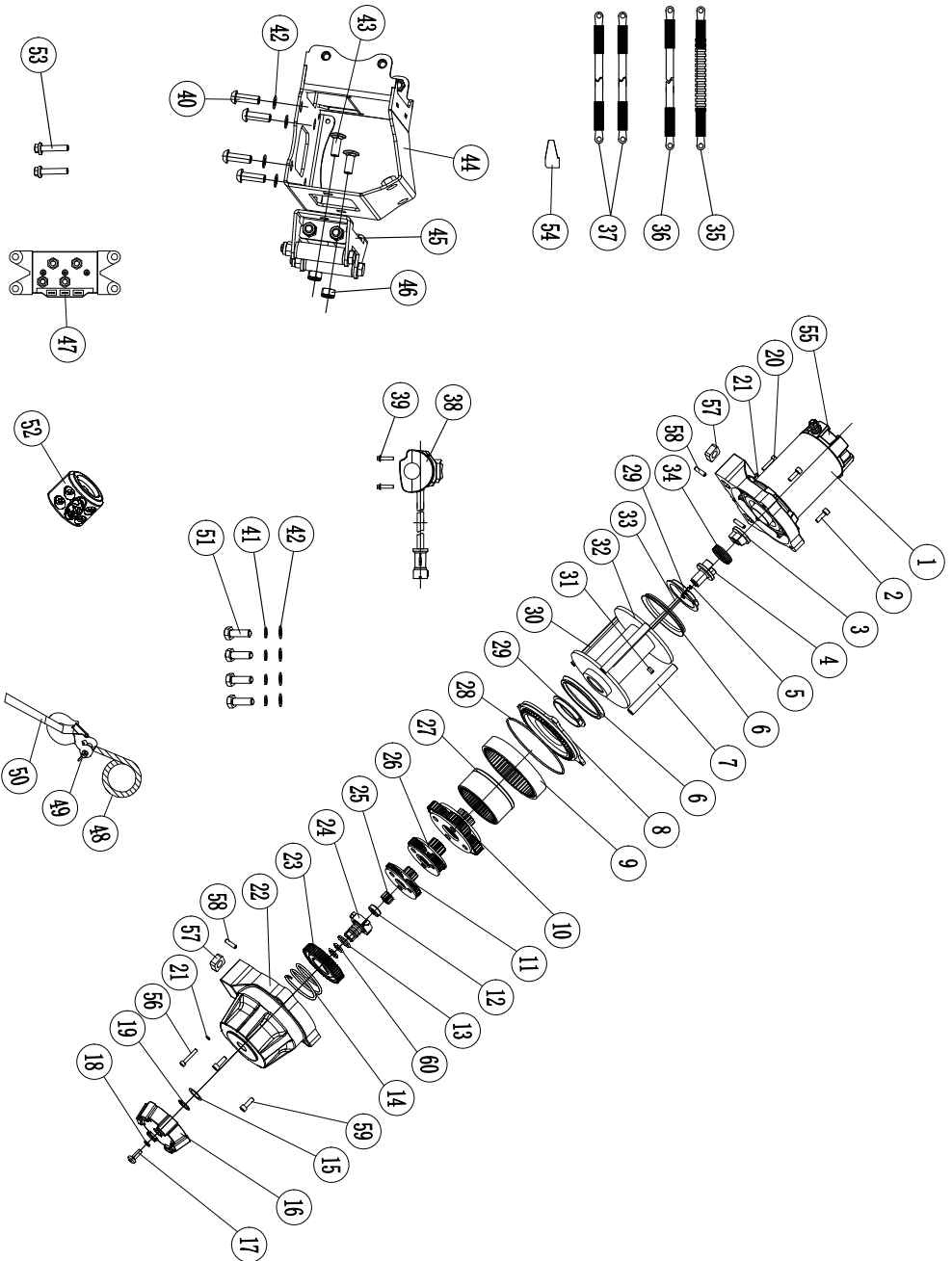
Line Pull and Cable Capacity

Layers of cable on drum		1	2	3	4	5
Max pulling capacity per layer	lbs	2500	2089	1794	1572	1399
	kgs	1134	948	814	713	635
Cable capacity per layer	ft	6.9	15.4	25.3	36.7	45.9
	m	2.1	4.7	7.7	11.2	14



AMP-25-R2 Specifications

Parts Diagram



Winch Parts List

AMP-25-R2 Specifications

No	Part#	Description	Qty	No	Part#	Description	Qty
01	MOTOR-AS25	Motor Assembly	1	41	250063-B	Washer Ø8, Locking	4
02	410018-B	Bolt M5 x 16	2	42	250070-B	Washer Ø8, Flat	8
03	450001	Coupling, I	1	43	AM250004	Carriage Bolt M10 x 25	2
04	450003A	Coupling, II	1	44	NV-740	Sportsman Winch Mount - Wrinkle Texture	1
05	410001	Spring	1	45	ATV-RF	Roller Fairlead	1
06	500001	Self-Seal Packing	2	46	250036-B	Locking Nut M10	2
07	500018	Tie Bar Ø10	2	47	AP-CONT	Contactora(11D2)	1
08	500002A	Clutch Cover	1	48	ATV-CBL-3K	Cable Assembly, 3/16 in. x 45.9 ft	1
09	410005	Gear Ring I	1	49	SE-HOOK	Clevis Hook - Black E-Coat	1
10	AS350001	Gear Carrier Assembly, Output	1	50	250030	Strap - Blue	1
11	410009	Gear Carrier Assembly, Input	1	51	250032-B	Bolt M8 x 25	4
12	GB2760BB0606-2RS	Radial Ball Bearing 606 Sealed	1	52	ATV-SCHS	Split Cable Hook Stopper	1
13	500003	O-Ring Ø19 x 2.4	1	53	AM250005	Hexagonal Flange Self-Threading Screw M5 x 25	2
14	410014	Clutch Spring	1	54	250061	Terminal Protector	6
15	500019	Stainless Washer Ø16 x Ø22 x 0.5, Flat	1	55	AS-CAPKIT	End Cap Assembly	1
16	500004A	Clutch Cap	1	56	450026-B	Bolt M4 x 25	1
17	450030-B	Cap Screw M6 x 16	1	57	500016	Square Nut	4
18	250017-B	Washer Ø6, Locking	1	58	500017	Elastic Cylindrical Pin Ø3 x 14	4
19	250011	Circlip Ø15	1	59	250051-B	Screw M5 x 18	2
20	500005	Bolt M4 x 20	1	60	500020	O-Ring Ø13 x 2	2
21	500006	Washer Ø4, Flat	2				
22	500007B	Gear Housing	1				
23	500008	Cam Clutch Gear	1				
24	500009A	Axis Support Bushing	1				
25	410015	Sun Gear, Input	1				
26	410008	Gear Carrier Assembly	1				
27	410007A	Gear Ring II	1				
28	410004A	O-Ring Ø100 x 1.9	1				
29	410016	Drum Bushing	2				
30	500010A	Hexagon Tie Bar 6 x 87mm	1				
31	500011	Hexagon Socket Set Screw w/ Cone Pt M5 x 8	1				
32	AS250100	Drum Assembly	1				
33	500012	Hexagon Shaft	1				
34	450002	Spring, Coupling	1				
35	AP-BAT-WIRE1	Battery Wire with Loom Covering - Red	1				
36	AP-BAT-WIRE2	Battery Wire - Black	1				
37	AP-WIN-WIRE	Winch Wires - Blue/Yellow	2				
38	AP-CMR	Clamshell Mini Rocker Switch	1				
39	AM250006	Hexagon Flange Screw M4 x 16	1				
40	AM250003	Hexagonal Socket Button Head Screw M8 x 25	4				

Troubleshooting

Problem	Cause	Solution
Winch runs one way	Defective or Stuck Contactor	Tap Contactor to loosen plungers. Repair or Replace Contactor.
	Defective Switch Assembly	Replace Switch Assembly.
	Contactor Issue	Double check your winch wiring diagram to make sure all wires are correct. Refer to our contactor troubleshooting guide at www.kfiproducts.com under "Support" Call KFI Technical support
Contactor clicks but the winch does not run	Wired Incorrectly	Double check your winch wiring diagram to make sure all wires are correct. Hand remote / Dash rocker wires need to always be green to green and black to black.
		Call KFI Technical support
	Motor Issue	Call KFI Technical support
Motor runs but the cable is not moving	Brake Spring installed backwards	Call KFI Technical support
	Cable is not Attached to the Spool	Refer to our cable retie guide at www.kfiproducts.com under "Support"
	Winch is not engaged	Rotate the clutch cap to "engage"
Motor runs slowly or without normal power	Broken coupler or Stripped shaft	Replace Coupler / Shaft
	Worn Brushes	Get a replacement End-Cap #A-CAPKIT Call KFI Technical support
	Loose or corroded cable connections	Clean, Tighten, or Replace
Motor is overheating	Winch running time is too long	Allow winch to cool down periodically.

WARNING

PLOWING ALERT

READ BEFORE USING YOUR WINCH TO LIFT A PLOW

ATV winches are one of the most widely used methods of lifting a plow. When used properly they are a perfect match to any plow system but proper precautions and correct usage are required to prevent costly damage.

When lifting a plow using a winch it is very important to stop the plow before its full lift height is reached. Failure to do so will cause the winch to pull against itself and can, and most likely will, cause damage to the winch, your plow frame and your ATV.

Please remember that winch damage such as stripped gears, broken housings and bent and damaged parts caused by exceeding your plows lift height are not covered by warranty.

Special precautions should be taken when backing up or other instances where you may be distracted and forget your finger is still on the power-in switch.

A little practice and common sense will ensure a trouble free plow season and prolong the life of your equipment.



AMP-25-R2 KFI Products

KAPPERS FABRICATING INC.

TWO YEAR LIMITED LIFETIME WARRANTY

Warranty Qualifications

Kappers Fabricating Inc. (KFI) will register this warranty upon receipt of your Warranty Registration Card and a copy of your sales receipt from one of KFI's resale locations as proof of purchase. Please submit your warranty registration and your proof of purchase within Fifteen (15) days of the date of purchase.

Repair/Replacement Warranty

KFI warrants to the original purchaser that mechanical components will be free of defects in material and workmanship for the usable lifetime of the product (180 days for commercial use); and electrical components will be free of defects in material and workmanship for (2) years (180 days for commercial use); from the original date of purchase. Transportation charges on product submitted for repair or replacement under this warranty are the sole responsibility of the purchaser. This warranty only applies to the original purchaser and is not transferable.

Do not return the unit to the place of purchase

Contact KFI's Technical Service and KFI will troubleshoot any issue via phone or e-mail. If the problem is not corrected by this method, KFI will, at its option, authorize evaluation, repair or replacement of the defective part or component at a KFI Service Center. KFI will provide you with a case number for warranty service. Please keep it for future reference. Repairs or replacements without prior authorization, or at an unauthorized repair facility, will not be covered by this warranty.

Warranty Exclusions

This warranty does not cover the following repairs and equipment:

Normal Wear

Winches need periodic parts and service to perform well. This warranty does not cover repair when normal use has exhausted the life of a part or the equipment as a whole.

Installation, Use and Maintenance

This warranty will not apply to parts and/or labor if this winch is deemed to have been misused, neglected, involved in an accident, abused, loaded beyond the winch's limits, modified, installed improperly or wired incorrectly to any electrical component. Normal maintenance is not covered by this warranty.

Other Exclusions

- The winch cable or synthetic rope.
- Cosmetic defects such as paint, decals, etc.
- Accessory parts such as storage covers.
- Misuse, abuse, neglect, Acts of God, terrorism and causes beyond the control of KFI.
- Problems caused by parts that are not original Kappers Fabricating Inc. parts.
- Cable Stacking and Water Submersion or Damage Caused by Water.

Warranty Procedure

1.) Contact KFI Technical support to acquire a Return Authorization (RA) number. 2.) KFI may request additional materials (such as original sales receipt, date of purchase, technical details, or photos of Product condition) prior to issuing an RA number. 3.) At the discretion of KFI, Buyer shall mail, ship, or otherwise deliver to KFI the Warrantied Product, at the address noted below.

Limits of Implied Warranty and Consequential Damage

Kappers Fabricating Inc. disclaims any obligation to cover any loss of time, use of this product, freight, or any incidental or consequential claim by anyone from using this winch. THIS WARRANTY IS IN LIEU OF ALL OTHER WARRANTIES, EXPRESS OR IMPLIED, INCLUDING WARRANTIES OF MERCHANTABILITY OR FITNESS FOR A PARTICULAR PURPOSE

A unit provided as an exchange will be subject to the warranty of the original unit. The length of the warranty governing the exchanged unit will remain calculated by reference to the purchase date of the original unit.

This warranty gives you certain legal rights which may change from state to state. Your state may also have other rights you may be entitled to that are not listed within this warranty.

Warranty

Contact Information

Address

KFI Products
Winch Customer Service
P.O. Box 32
721 Sata Drive
Spring Valley, MN 55975

Corporate:

Kappers Fabricating Inc.
1015 Industrial Dr.
P.O. Box 32
Spring Valley, MN 55975

Customer Service

Mon – Thur 8:00 AM – 5:00 PM (CST/CDT)
Fri 7:00 AM – 1:00 PM (CST/CDT)
Toll Free: 1-877-346-2050 Option #1
Fax no.: 1-507-346-2010
sales@kfiproducs.com

Technical Service

Mon – Thur 8:00 AM – 5:00 PM (CST/CDT)
Fri 7:00 AM – 1:00 PM (CST/CDT)
Toll Free: 1-877-346-2050 Option #2
tech@kfiproducs.com

Agreement

By purchasing and/or using any item from KFI and/or its parent company, the purchaser acknowledges to be at least 18 years of age. Purchaser also acknowledges that winch products are inherently dangerous and hazardous, and that use of the product involves the risk and danger of serious bodily injury including, but not limited to, disability, paralysis, dismemberment and death. Additional risks may exist that may not be readily foreseeable.

Purchaser agrees to comply with all applicable laws governing the use of the product, and to observe all appropriate safety precautions, including the wearing of appropriate protective gear and clothing, and operating the product safely and under safe conditions.

Purchaser fully accepts and assumes responsibility for all such risks, losses, costs, and damages incurred as a result of the use of the product, whether by purchaser or anyone using the product with or without purchaser's permission.

Your purchase of the product shall constitute your release and indemnity in favor of KFI and/or its parent company, its shareholders, officers, directors and employees from any and all claims or injuries of every kind resulting from use or operation of the product, including costs and attorney's fees incurred in connection therewith.



1-877-346-2050

KFI Products
P.O. Box 32
721 Sata Drive
Spring Valley, MN 55975
www.kfiproducts.com

Made in China

©2019 Kappers Fabricating Inc.

Corporate Office:
Kappers Fabricating Inc.
P.O. Box 32
1015 Industrial Drive
Spring Valley, MN 55975 USA